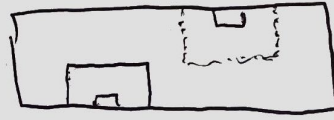
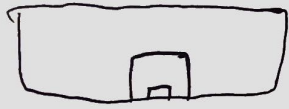
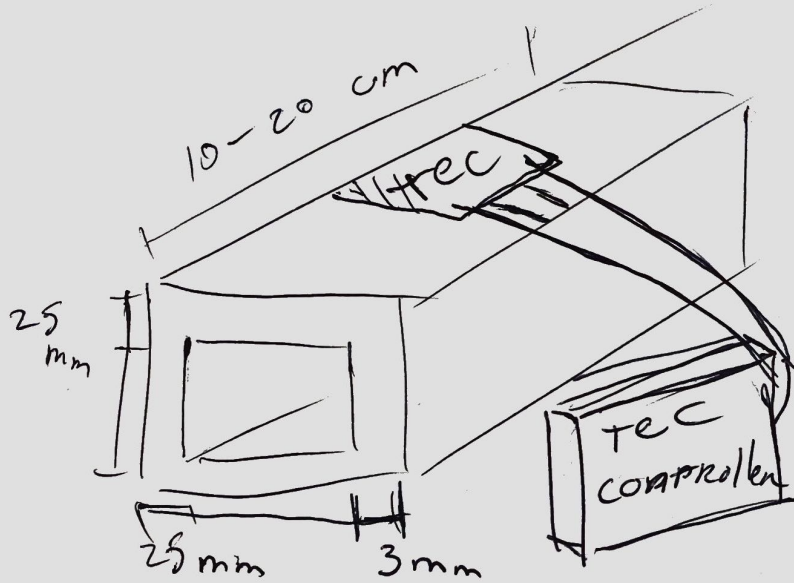


cavity plaatsing TEC peltrek jonderkano

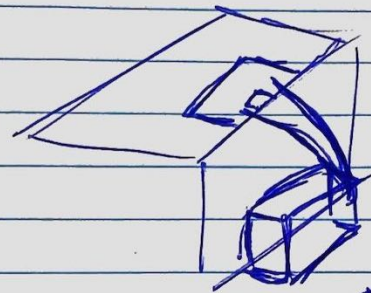
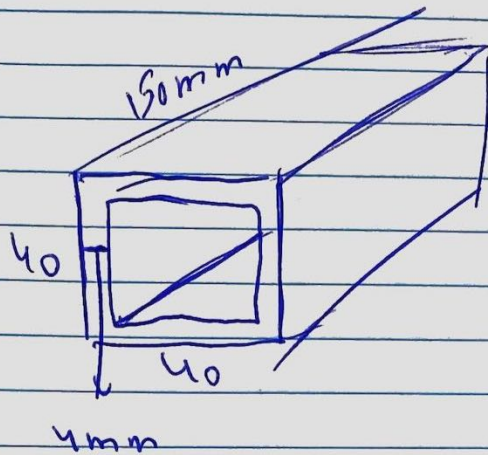
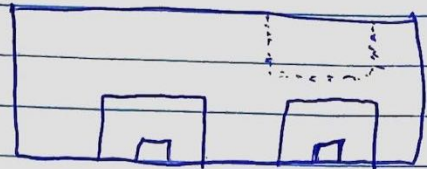
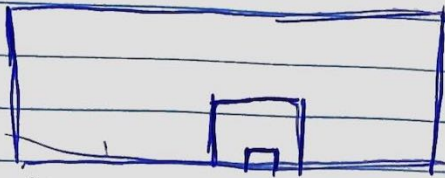


Freezen

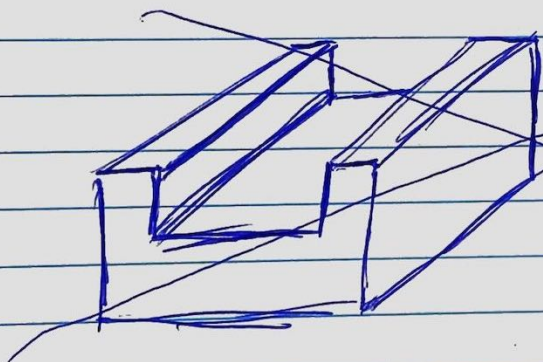




10 of 15 cm



tec
controller



Holder Cavity
concept

Why 150mm and where does the cavity come in the prototype?

When do sensors arrive?

1 or 2 TECs?

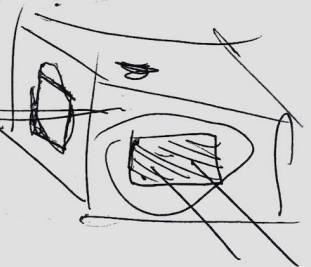
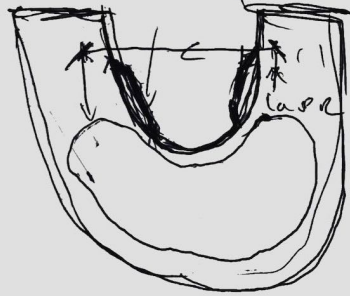
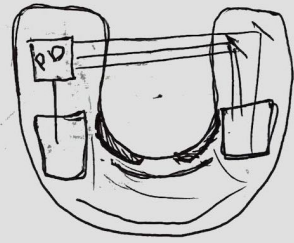
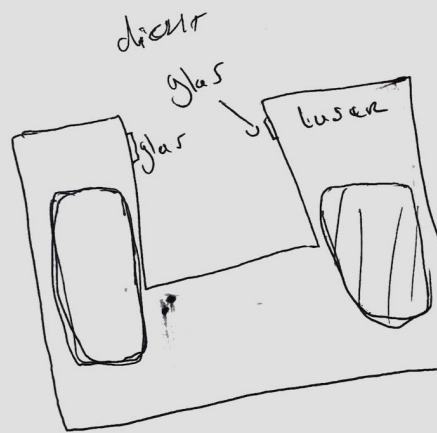
What is the height of the holder?

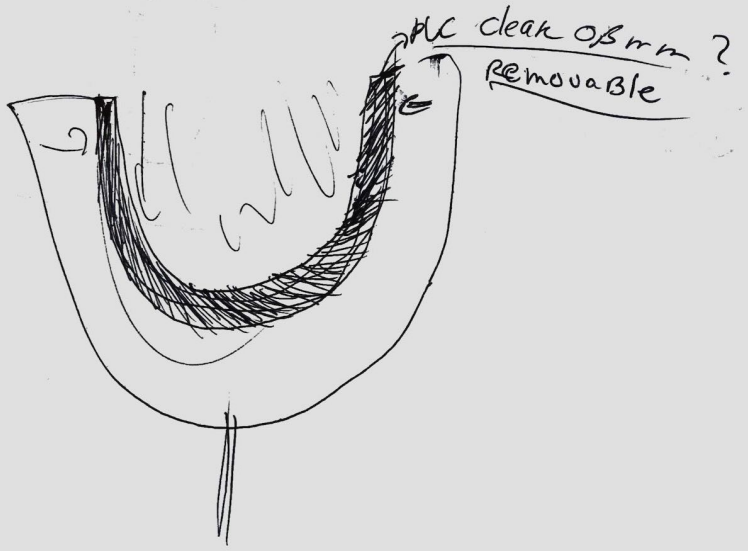
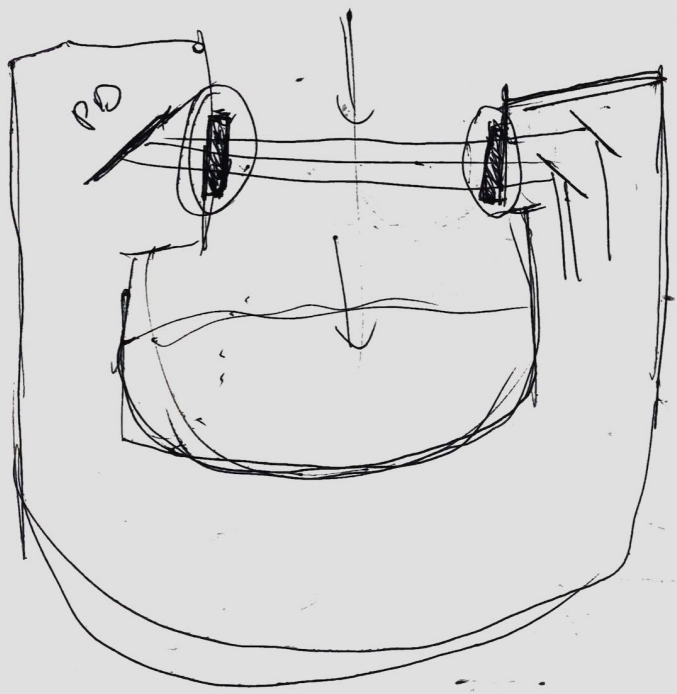
1 = N stikstof
4 = H waterstof

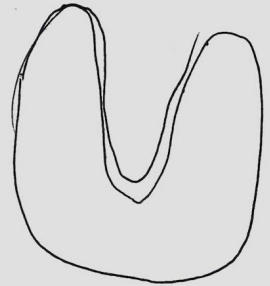
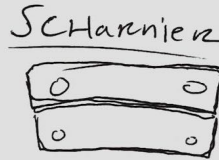
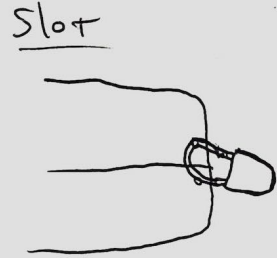
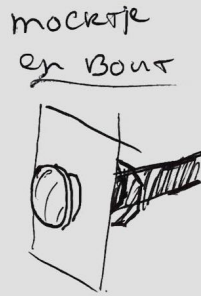
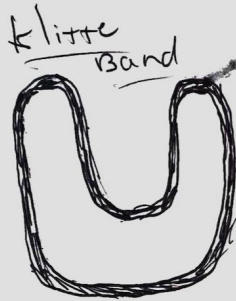
Ammonia Remover



Clean PVC
laagjes tegen
ammoniak







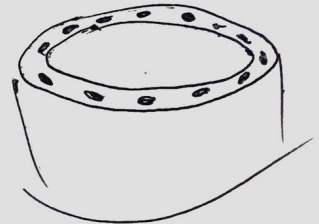
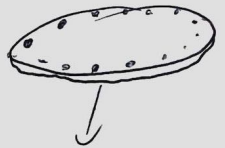
~~Plan~~ presentatie

materiaal keuze = RUS, Aluminium, lood, magnesium, titanium
 protection films = pregis (SP5212020C) LDPE Solvent clear

materiaal open/dicht maken =

Protection films = PoliFilm PF12/3 WP
 voor Aluminium PF12/4 WP

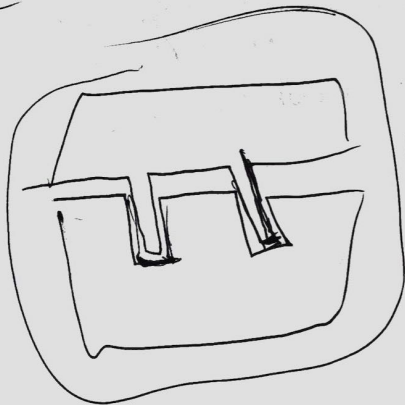
in de enclosure ook verrijen maken voor bepaalde onderdelen



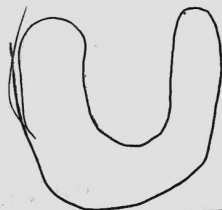
Open / dicht ✓
materiaal ✓

Vast zitten aan de muur ✓

Snel schoon maakbaar



Klitten Band
Bous en ~~roef~~
moleste
Slot

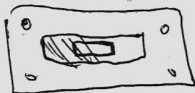


material = RVS, Aluminium Onderzoek Kobalst
Protection Films = Pregis = (SPS 212020C) (DPE Solvent. clear)
PoliFilm = PF 12/3 WP
PF 12/4 WP

Vakken voor onderdelen vast houden



↑
plaat



Connectors

Naar Cam gaan
voor Aluminium

Concept idea

diagnostische spiegel

1531 laser word versterkt door een EDFA
de licht

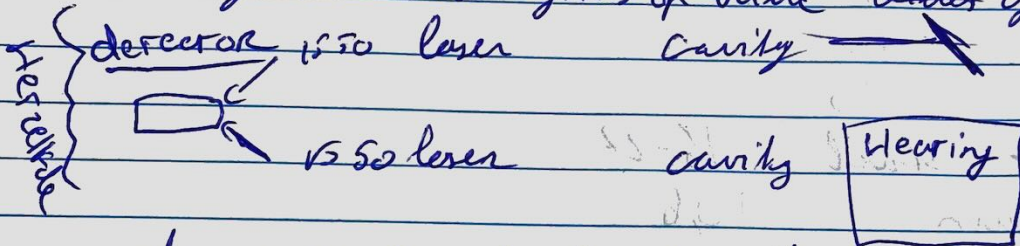
Fiber collimator maakt de licht stralen parallel

dan word licht weer laatst naar de 1550 laser

dit gebeurd er als het staat de power in de cavity

als power uitstaat dan gaat alles via de Pulse generation

dan zijn de wave lengths op beide ~~zijkanten~~ zijden hetzelfde



als power aanstaat veranderd de wave length van de bovenste cavity en laser

Beide lasers hetzelfde zijn Δ Hertz dan word het gemeten met de detectie

detector is soms 0 wave lengths verschil
dus dat niet zo is mocht we de wave lengths kunnen
zodat het wel 0 is

Controlled connect van beide lasers signalen om ze
met elkaar te verbinden
en het ziet het patroon wat het licht doet

dimensions? square or circle? or what form

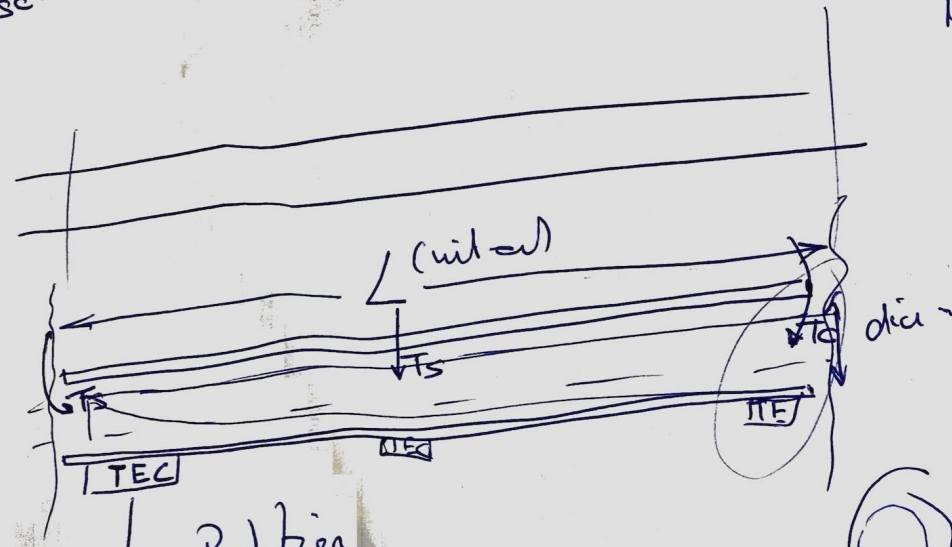
Optische lengte

$$= L \times (n_0 + \Delta T \times (\frac{\Delta n}{c}))$$

form does not matter

movable
10-20 cm

$$T_{env} = 30^\circ C$$



drum

material moet warmte goed geleide

→ Peltier



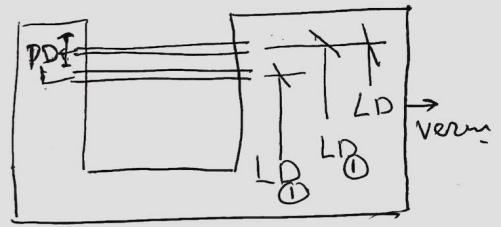
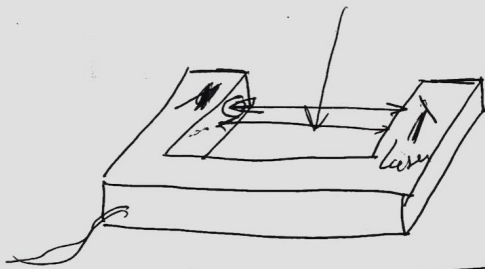
Cavity

grootte? Amkitt vliegen

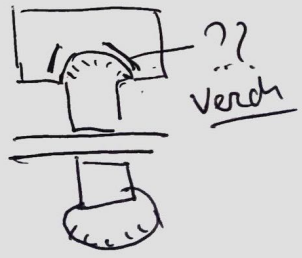
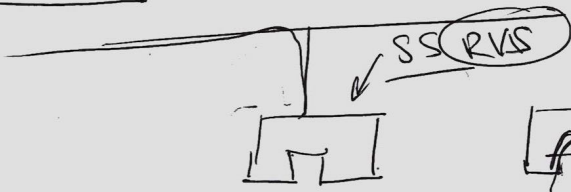
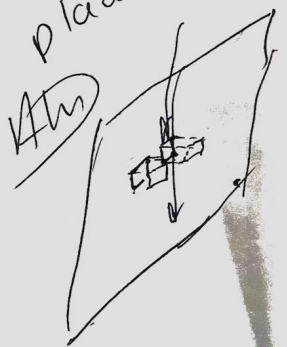


TS = Temp sensor Peltier

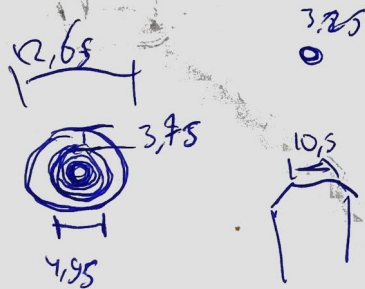
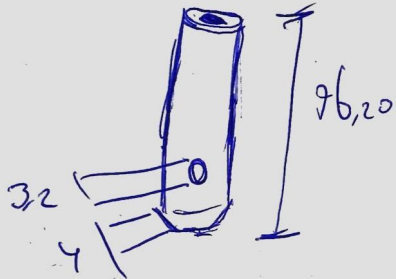
Form does not matter



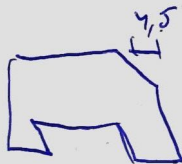
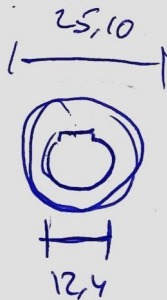
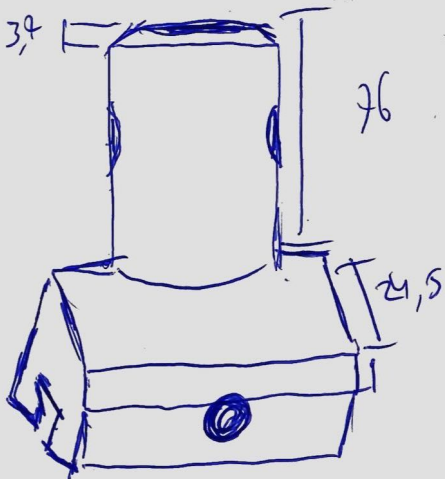
Plakat



- in mm



top draad ongeveer 10 mm



Dank u
met
u
Enclosure
gestreekt